



Notch Reservoir

Operations Plan 9-12-24

www.savenotchforest.com

North Adams

Corner of
Notch and
Reservoir
Roads

Take the right hand
turn to drive to the
summit of Mt
Greylock



North Adams


Entrance & Parking for Bellows Pipe Trail

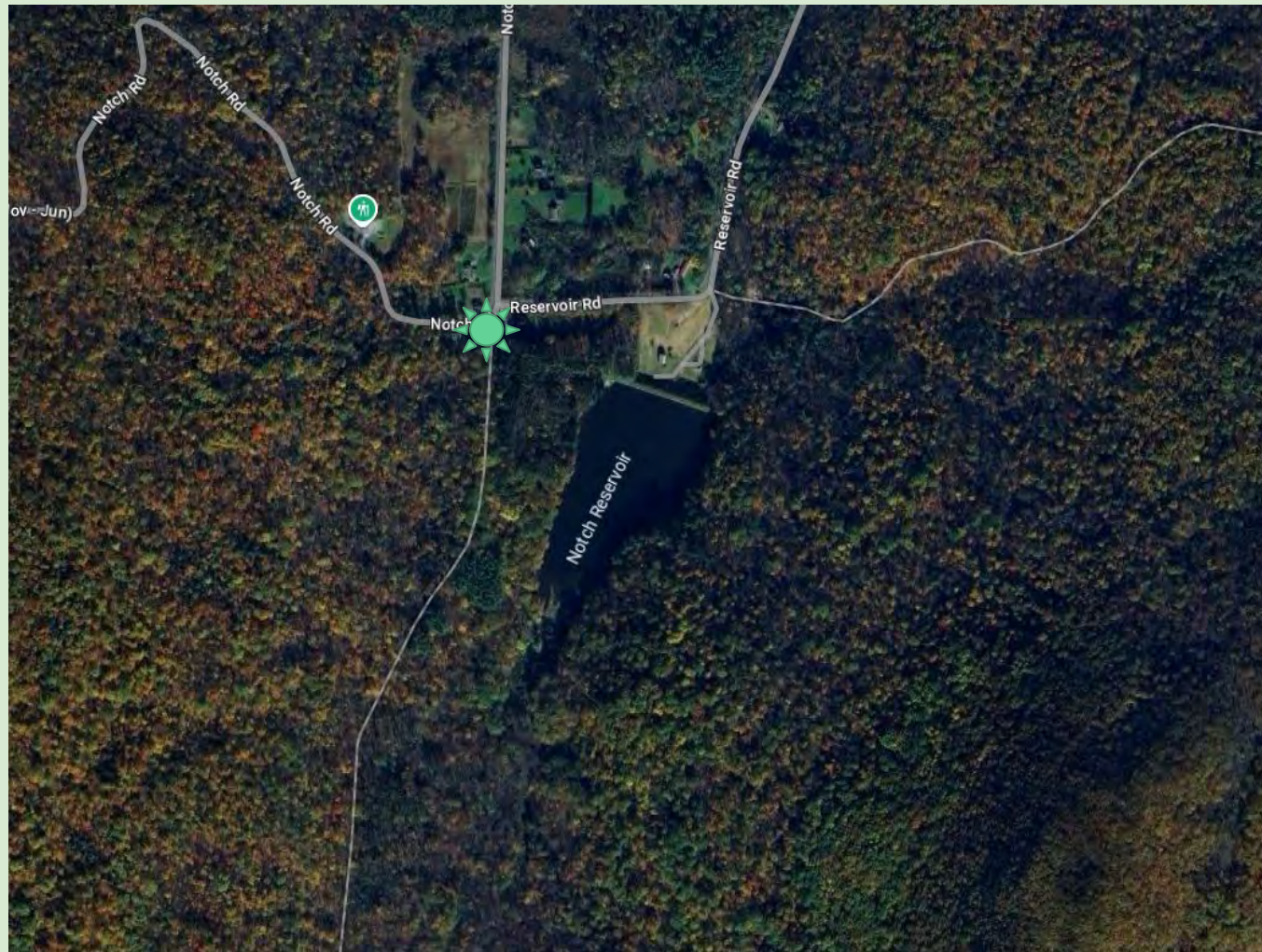


Notch Reservoir Watershed

Aerial view

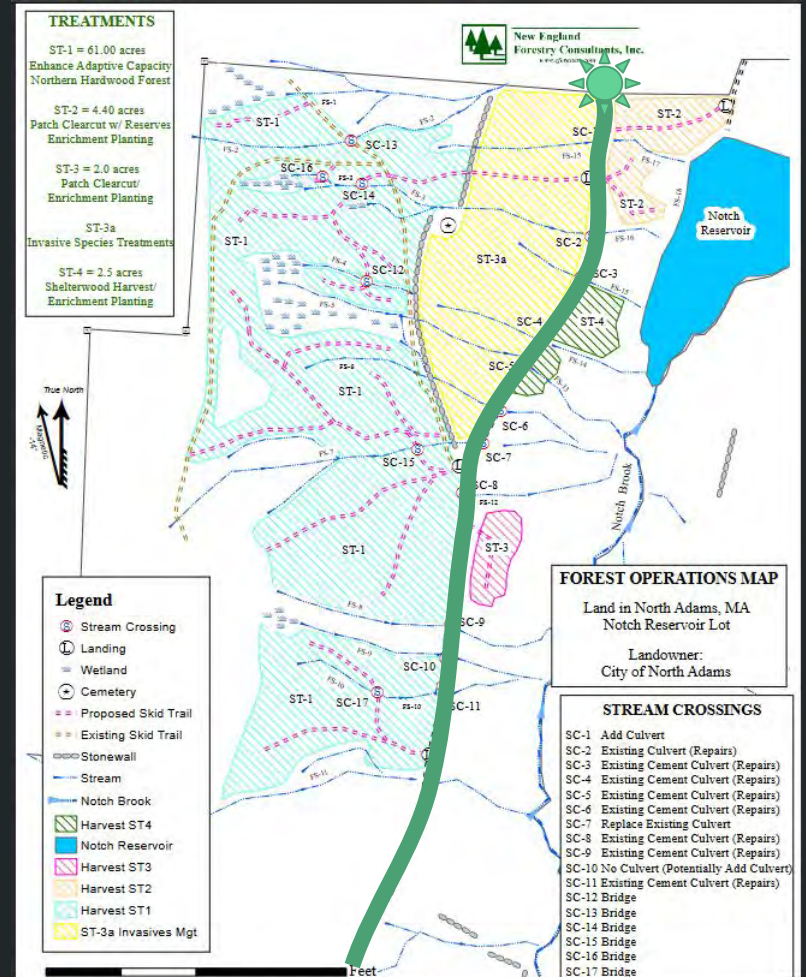
Corner of
Notch and
Reservoir Roads

Entrance to
Bellows Pipe Trail
marked with 



Operations Plan

as of
9/12/2024



Operations Plan

as of
9/12/2024



TREATMENTS

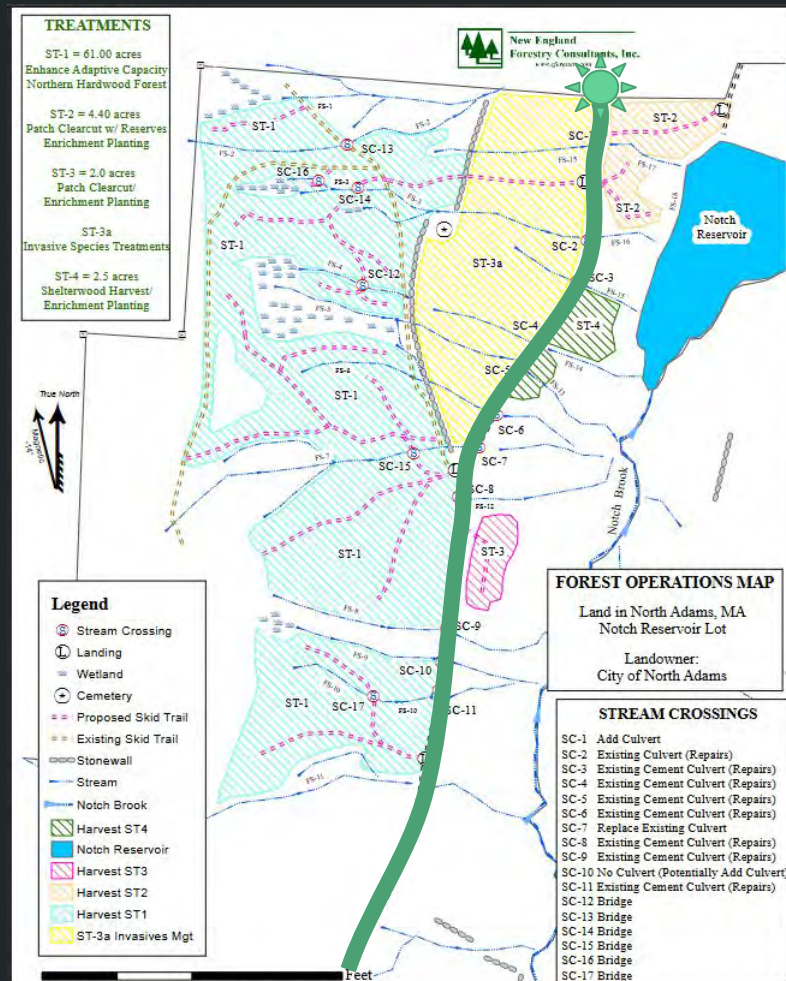
ST-1 = 61.00 acres
Enhance Adaptive Capacity
Northern Hardwood Forest

ST-2 = 4.40 acres
Patch Clearcut w/ Reserves
Enrichment Planting

ST-3 = 2.0 acres
Patch Clearcut/
Enrichment Planting

ST-3a
Invasive Species Treatments

ST-4 = 2.5 acres
Shelterwood Harvest/
Enrichment Planting

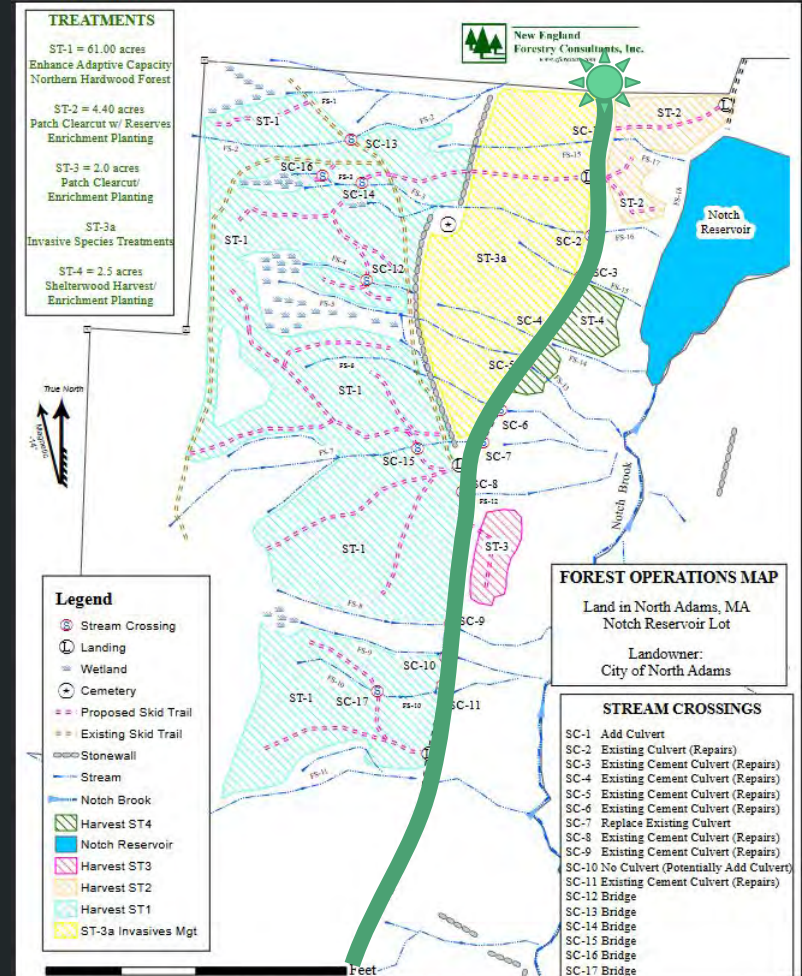


Cut and Replace

6.4 Acres: Patch Clearcut

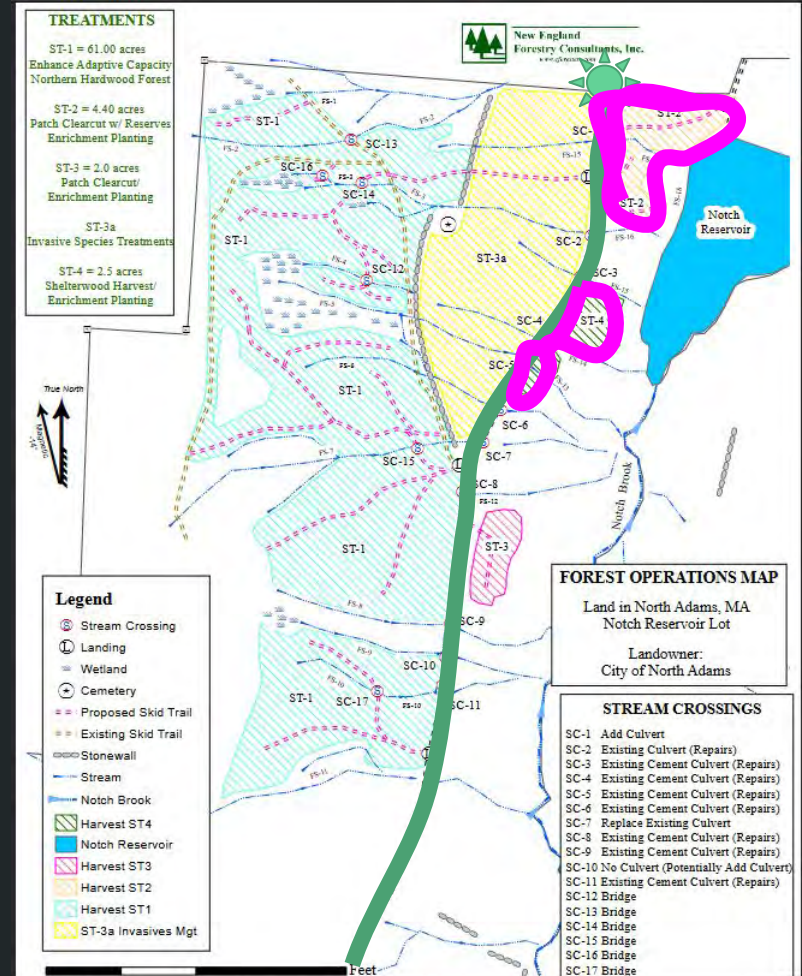
2.5 Acres: Shelterwood Harvest

= 9 acres



Clearcut

6.4 Acres: Patch Clearcut



Clearcut

50 ft from reservoir edge



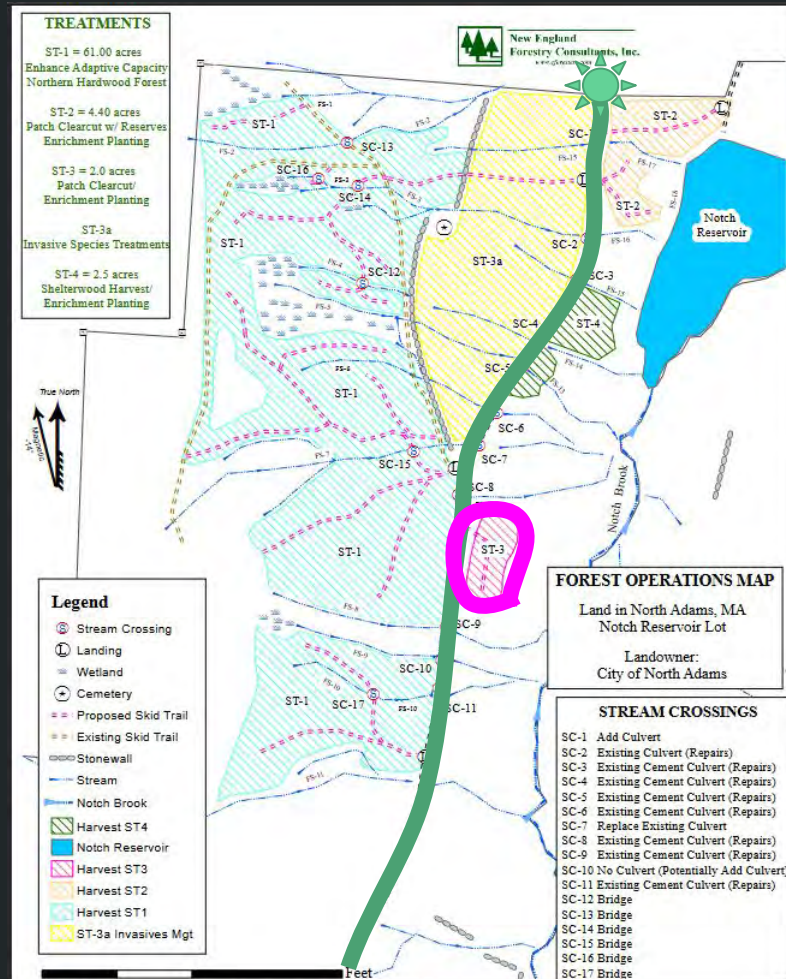
Clearcut:

Red Pine Plantation
& Deciduous succession



Shelterwood Cut

2.5 Acres Shelterwood Harvest



Shelterwood Cut

Replacing this:

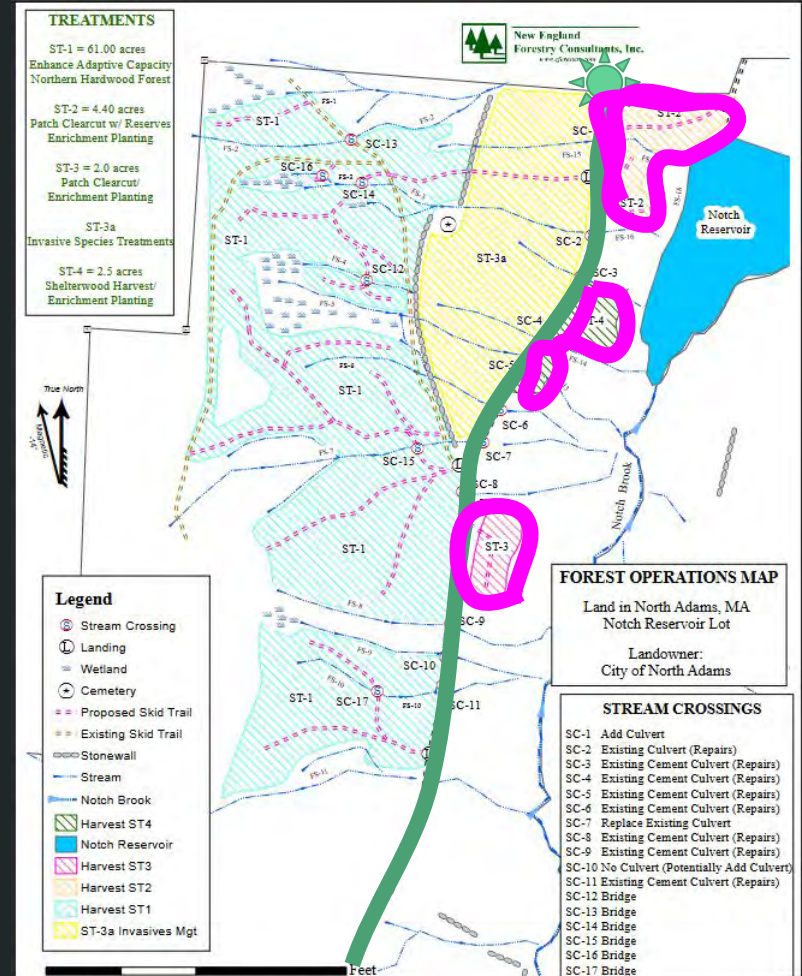


With this:



Cut and Replace

6.4 Acres: Patch Clearcut
+ 2.5 Acres Shelterwood Harvest
= 9 acres
for Enrichment Planting



Enrichment Planting

Replacing seedling
oak and maple...



Enrichment Planting

Replacing seedling
oak and maple...



with seedling
oak and hickory...
in cages



Cost of Cut and Replace

Removing softwood plantations
& replacing seedlings

with seedling
oak and hickory...
in cages



**Will cost the
city \$33,000**

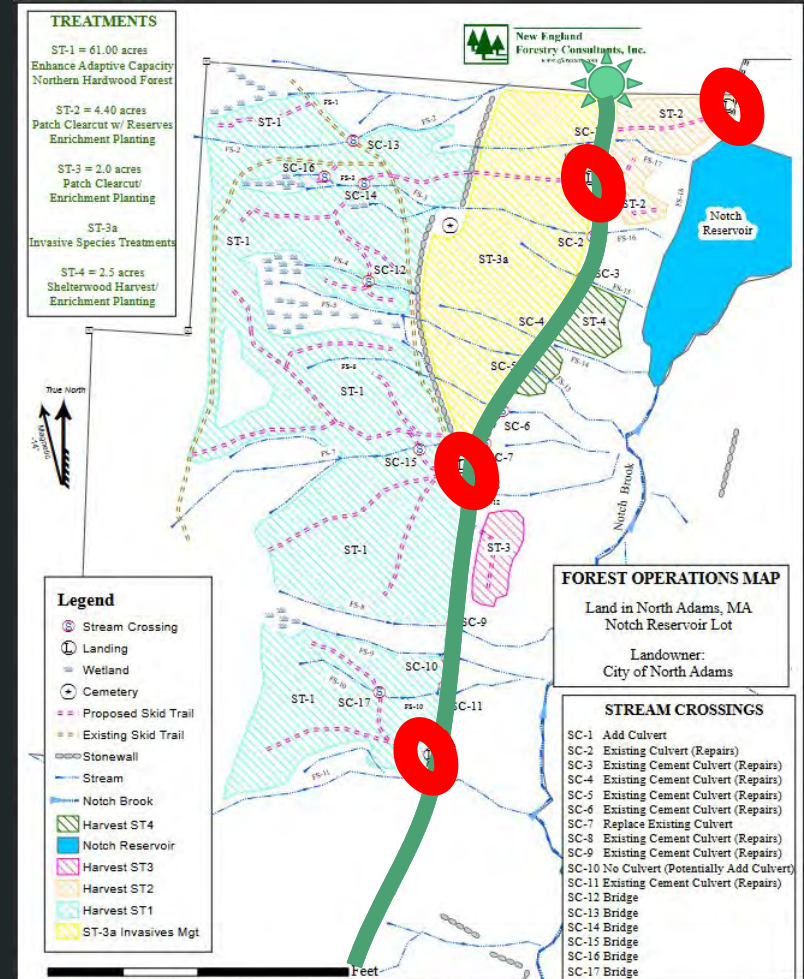
ST-2 (4.4-acres)	Patch Clearcut, Site Prep for Planting	\$2,695
ST-3 (2-acres)	Patch Clearcut, Site Prep for Planting	\$770
ST-4 (2.5 acres)	Shelterwood Harvest, Site Prep for Planting	\$2000
ST-2, ST-3, ST-4 (9-acres)	Enrichment Planting on 9-acres The total cost includes the following: <ul style="list-style-type: none">• Three Foot Tree stock 193 trees per acre @ \$8 per tree = (\$13,896)• Labor @ \$750 per acre = (\$6,750)• Tree Tubes for Tree Protection @ \$5 per Tube = (\$8,685)• Monitoring by Consulting Forester \$75 per hour for an estimated 20 hours = (\$1,500)• Potential Watering During Drought Conditions @ (\$600) per day for an estimated 14 days of watering = (\$8,400)	(\$39,231)



Landings

Are clearings for
stacking logs
loading trucks
and turning around

1(+) acre, each



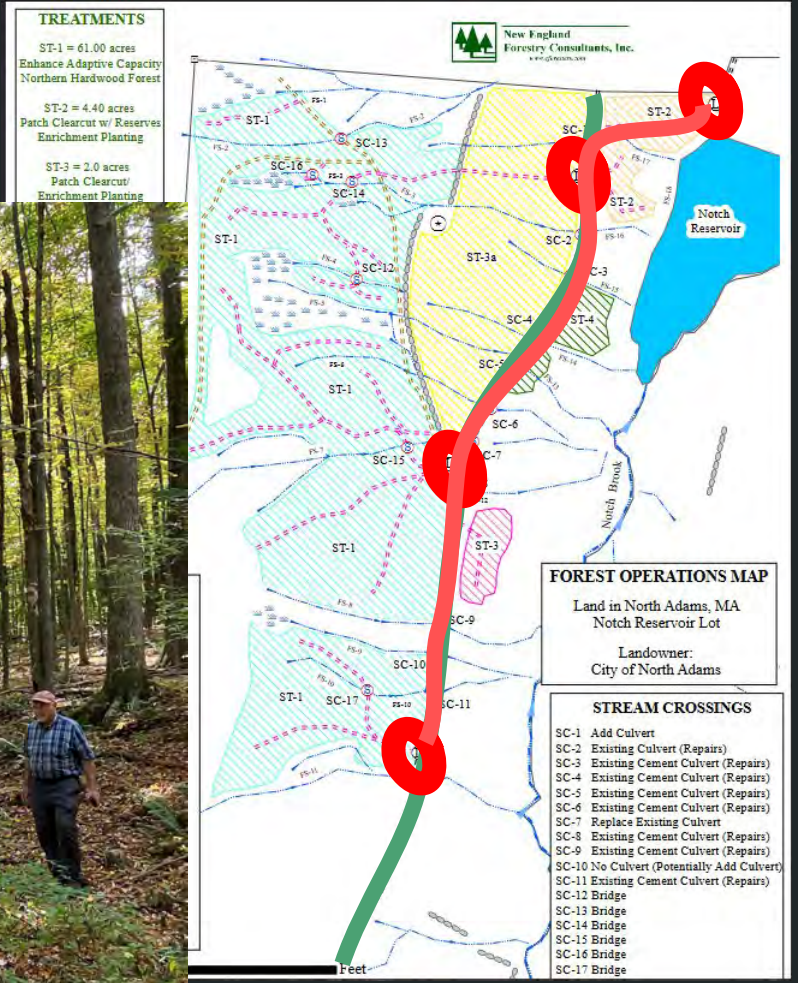
First Landing: 300 ft from trail entrance



Landings



Logging Road

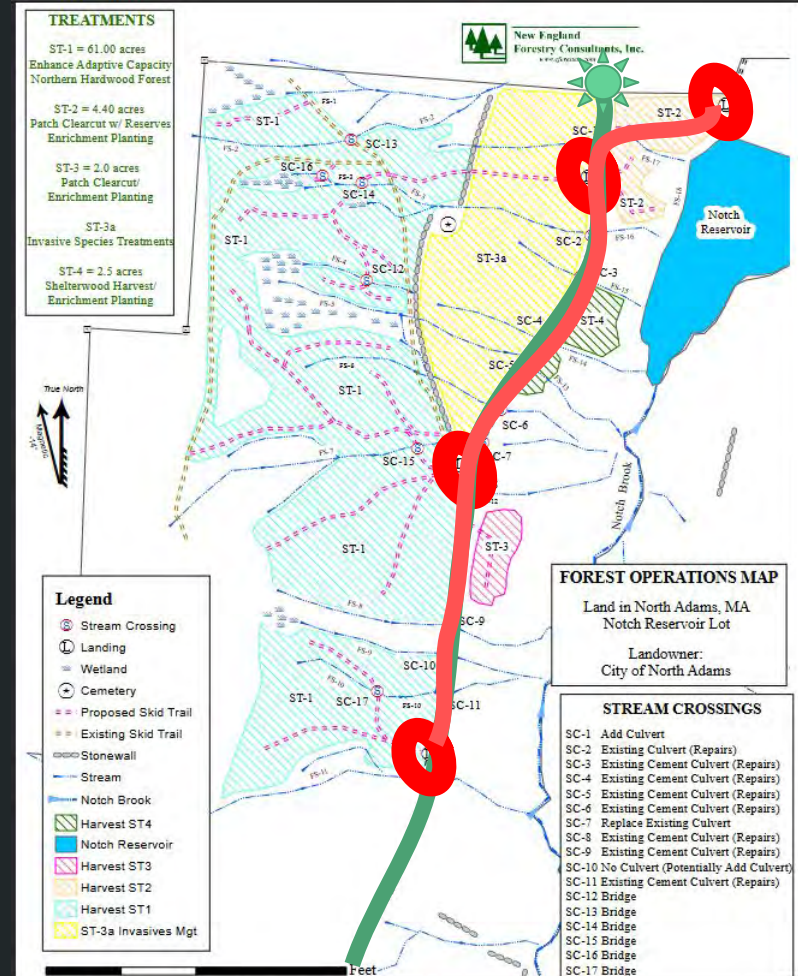


Bellows Pipe Trail



Logging Road

Sized for 18-wheel trucks



Watershed

1,088 acres

Purchased
by city of
North Adams
in 1893



Logged in **2014**
& **2017**.

How does it
look now?



Logged in **2014**
& **2017**.

**What does it
look like now?**



Logged in **2014**
& **2017**.

**What does it
look like now?**



Logged in **2014**
& **2017**.

**What does it
look like now?**

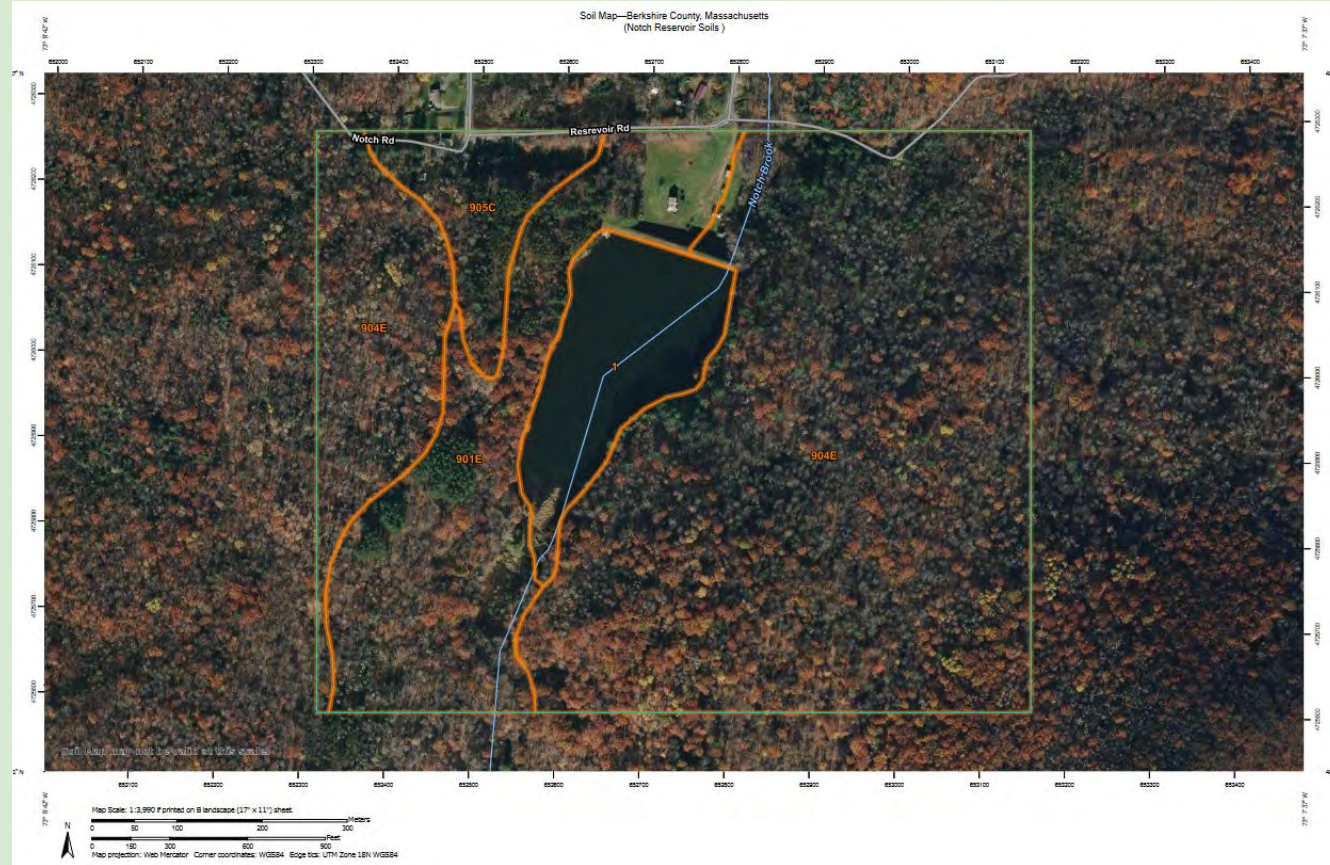


Soils

deep, fine, sandy loams, and extremely stony soils

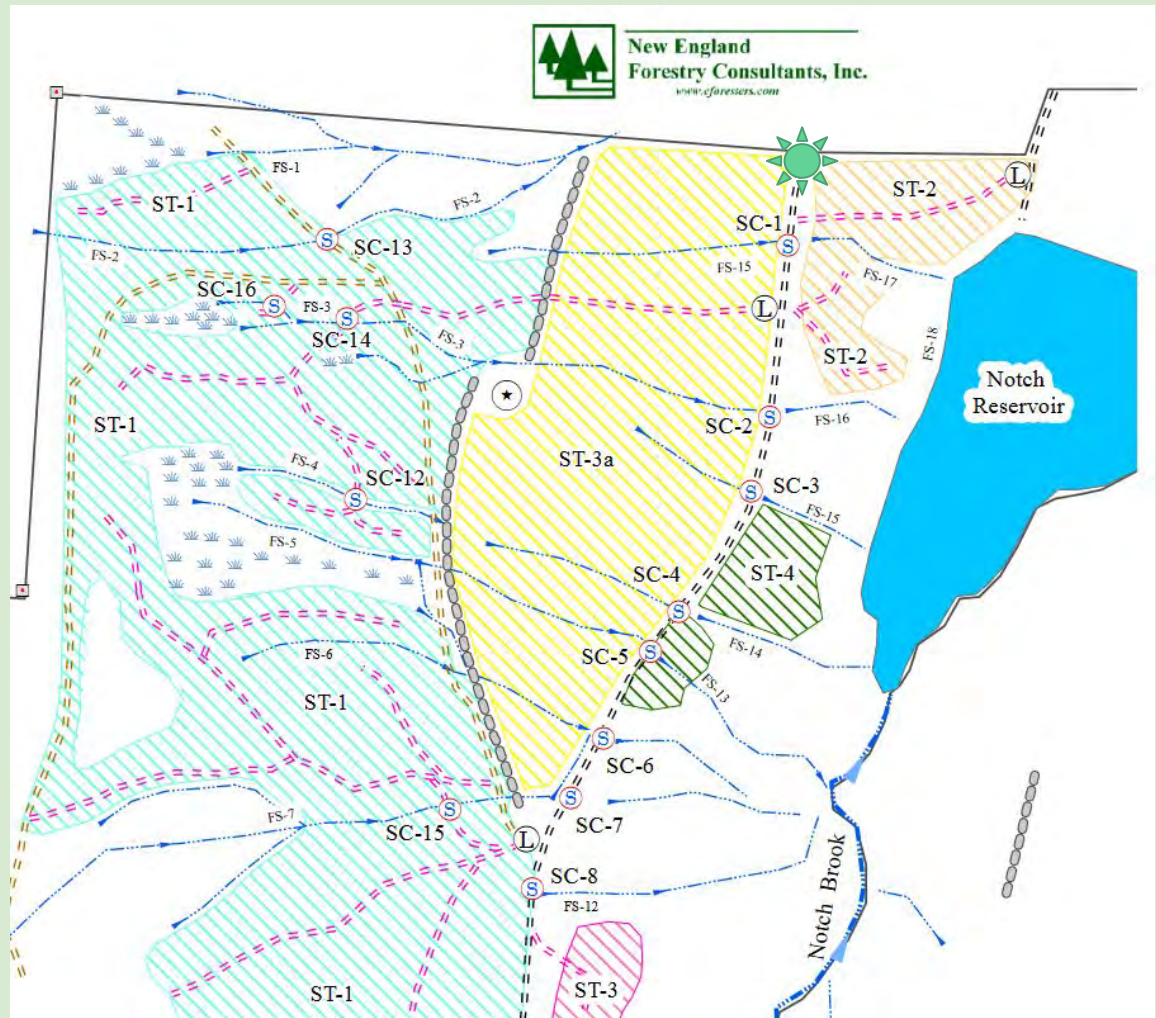
East and West side slopes are similar.

Similar levels of erosion can be expected.



Skid trails
not laid out
on site.

Wetland and
stream
buffers not
marked on
site.



Streams

Culverts

Wetlands

Slopes



Streams

Culverts

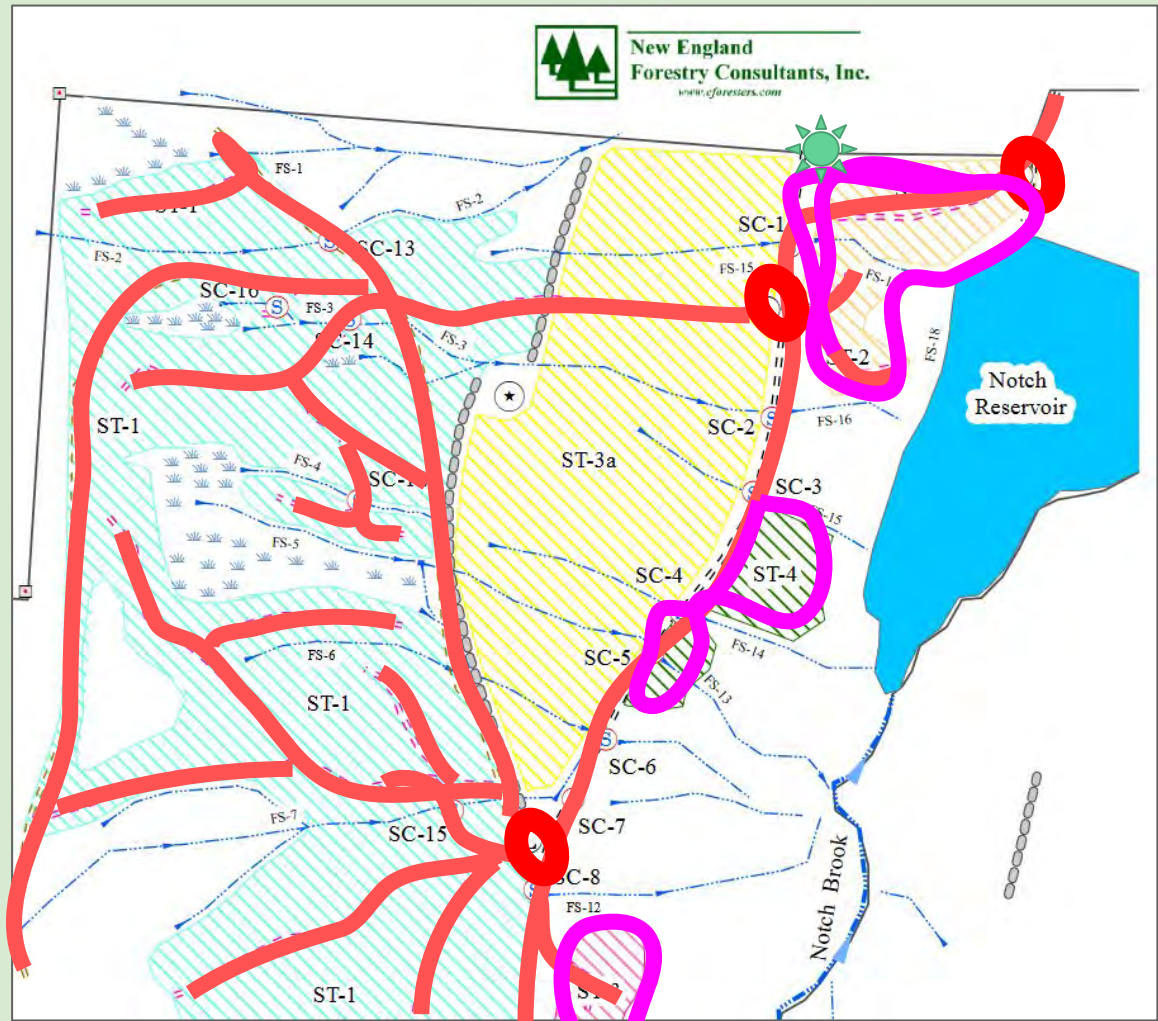
Wetlands

Slopes



Skid trails
not laid out
on site.

Wetland and
stream
buffers not
marked on
site.



Logged in **2014**
& **2017**.

**What does it
look like now?**





Cost to Dredge the Reservoir?

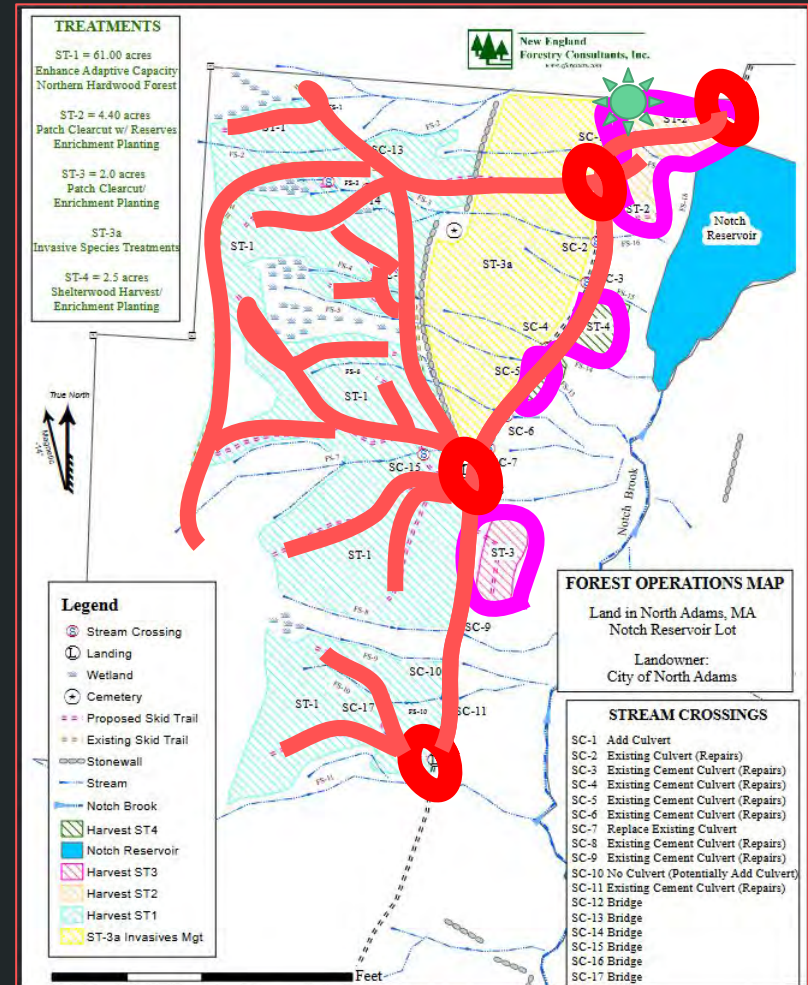


Water Quality

Clearcuts &
Landing Areas

Mud into Reservoir.

Dredging Reservoir =
Major Expense



Estimated
Financial
Projections,
as of 9/12/2024

+ \$45K

- \$64K

= - \$19K

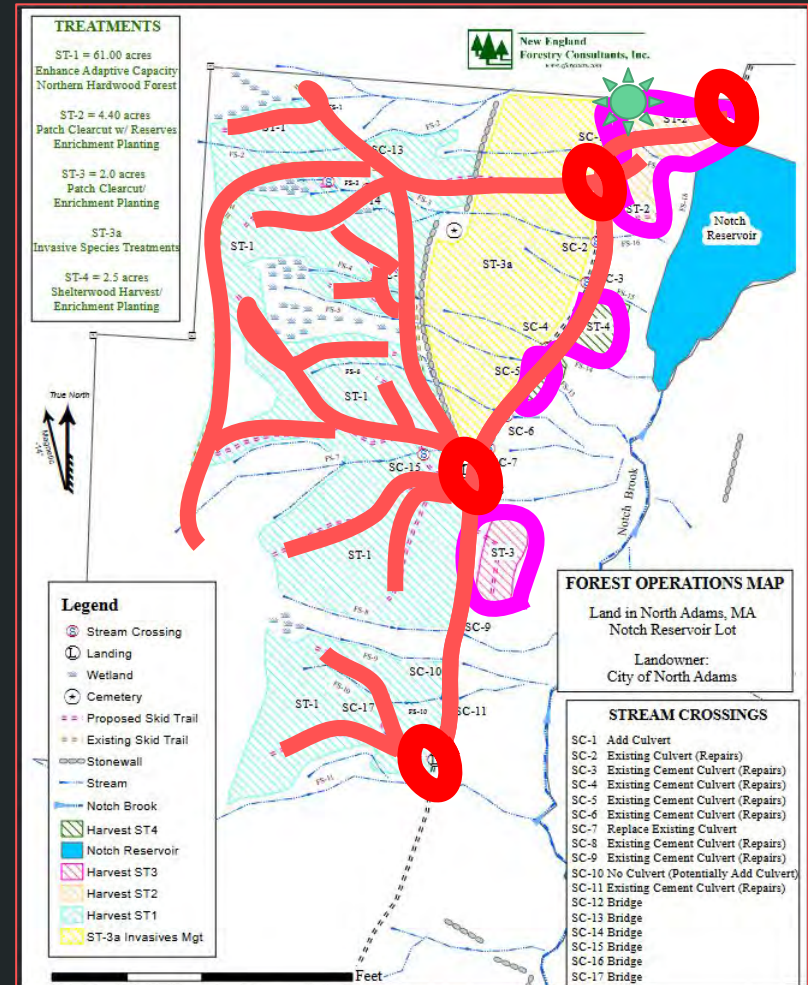
STAND	MANAGEMENT PRACTICE	NET REVENUE/(COST)
ST-1 (61-acres)	Enhance Capacity of Northern Hardwood Forest	\$40,000
ST-2 (4.4-acres)	Patch Clearcut, Site Prep for Planting	\$2,695
ST-3 (2-acres)	Patch Clearcut, Site Prep for Planting	\$770
ST-4 (2.5 acres)	Shelterwood Harvest, Site Prep for Planting	\$2000
ST-2, ST-3, ST-4 (9-acres)	Enrichment Planting on 9-acres The total cost includes the following: <ul style="list-style-type: none"> • Three Foot Tree stock 193 trees per acre @ \$8 per tree = (\$13,896) • Labor @ \$750 per acre = (\$6,750) • Tree Tubes for Tree Protection @ \$5 per Tube = (\$8,685) • Monitoring by Consulting Forester \$75 per hour for an estimated 20 hours = (\$1,500) • Potential Watering During Drought Conditions @ (\$600) per day for an estimated 14 days of watering = (\$8,400) 	(\$39,231)
ST-3a	Foliar Spray Invasive Species Treatments on 5-acres <ul style="list-style-type: none"> • \$800 Per Acre 	(4,000)
All Harvest Areas	C.I. F. Access & Forestry Operations (BMP's) <ul style="list-style-type: none"> • Culverts for SC-1, SC-7 & SC-10 (\$6,000) • Culvert Header Repairs at SC-1 through SC-11 (\$7,500) • Temporary Wood Bridge Mats for SC12-15 (\$2,500) • Skid Trail Layout (\$1,000) • Seed Landings with wildlife Mix (\$1,000) • Drainage Ditch Maintenance along Bellows Pipe Trail (\$3,000) 	(\$21,000)

Operations Plan

as of 9/12/2024

- Cutting
- Planting
- Herbicides
- Erosion (mud)

**Expense
and Ruination**





www.savenotchforest.com