

FRIENDS OF THE NOTCH RESERVOIR FOREST

savenotchforest.com



Bellows Pipe Trail – rated best fall hiking trail in US 2024

THE NOTCH RESERVOIR FOREST

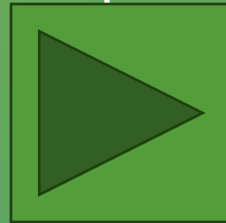
Threatened by
LOGGING in
November 2024



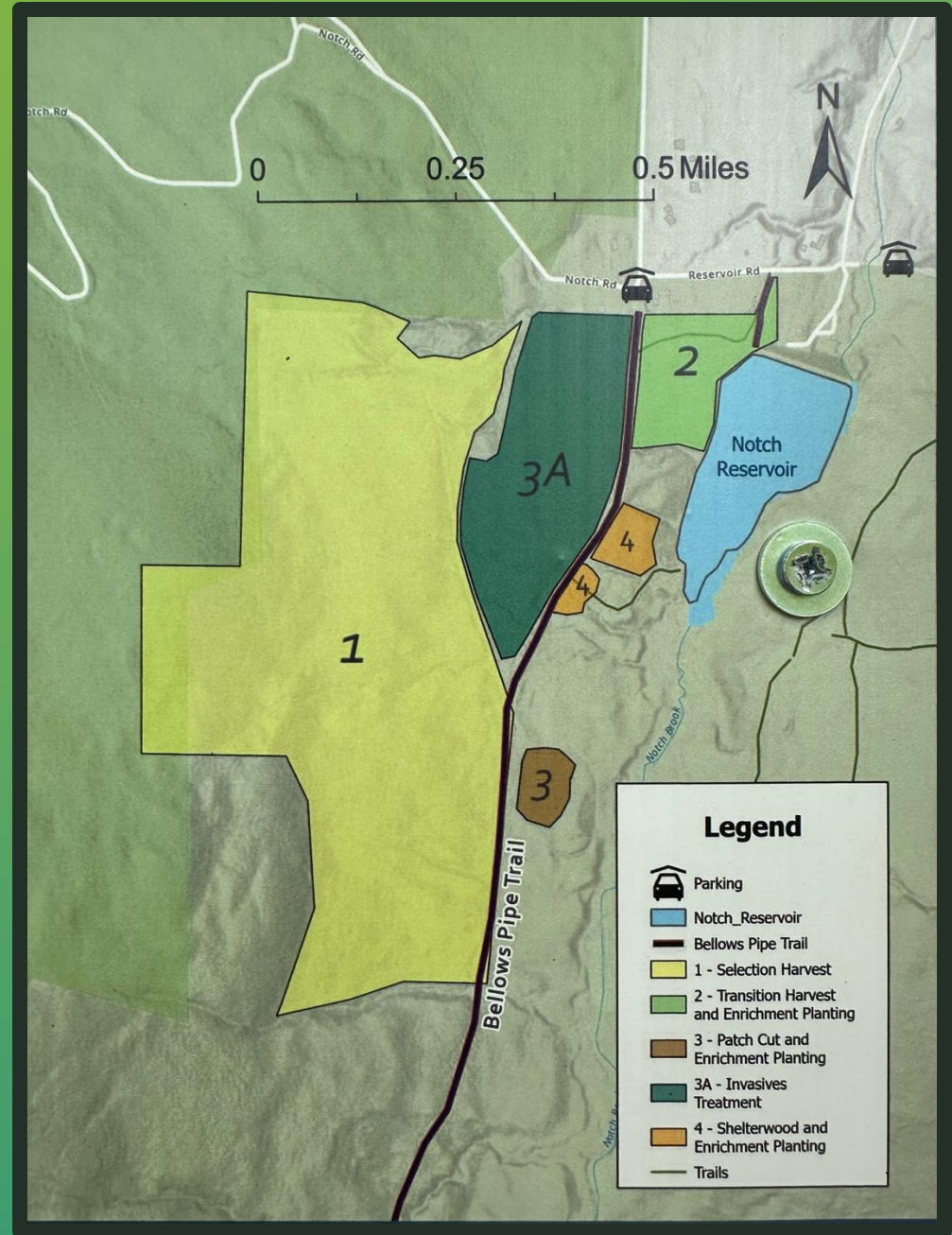
Bellows Pipe Trail – rated best fall hiking trail in US 2024

THE PLAN

- Clear cut – 4 acres
- Cutting – 70 acres
- Cutting in wetlands
- Replacing culverts
- Continued cutting
- 10-year cutting plan

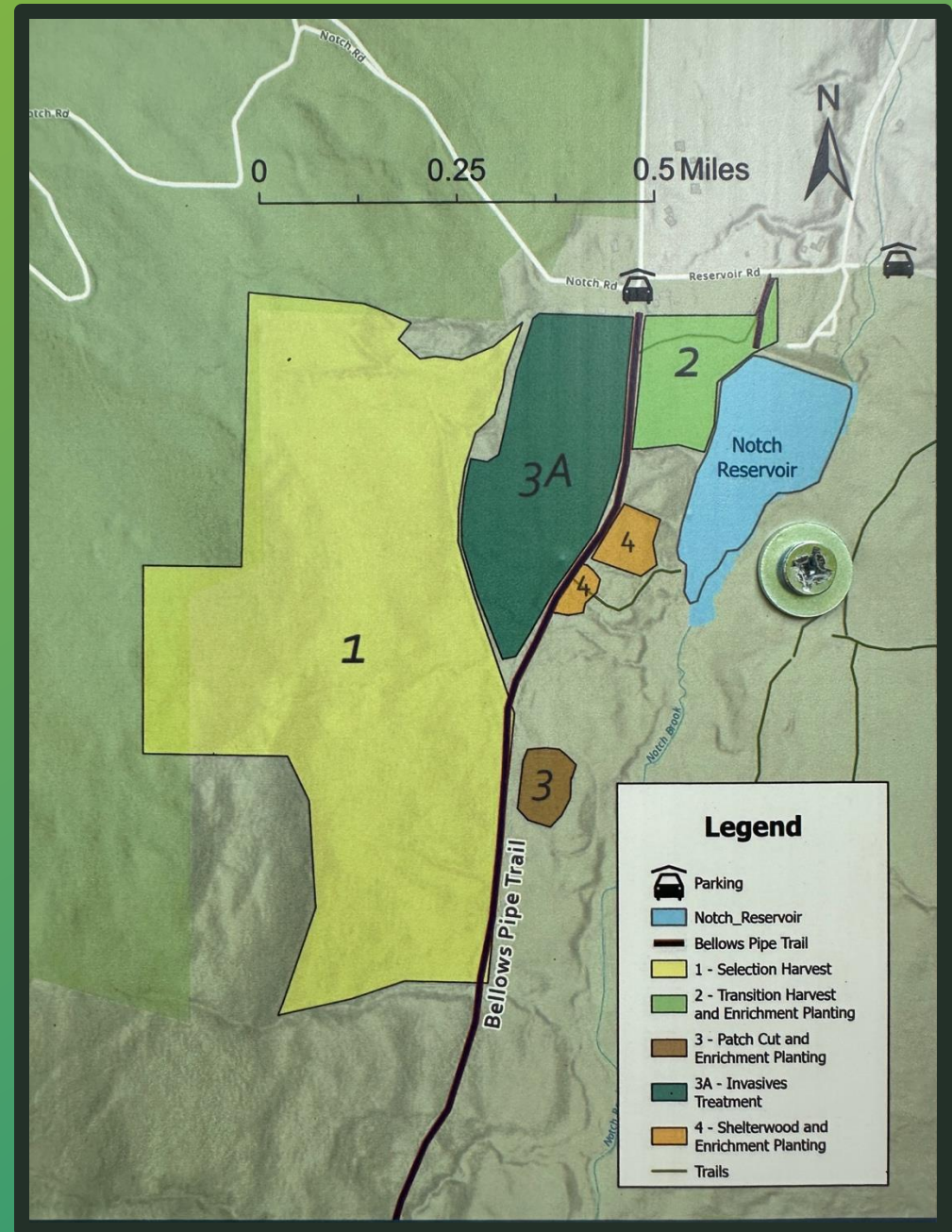
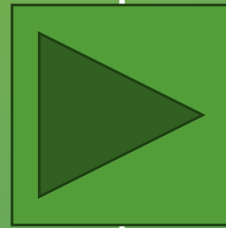


Site map by Mass Audubon 2024



PLANNERS

- City of North Adams
- Mass Audubon
- Mohawk Trail Woodlands Partnership
- The New England Forestry Foundation



WHY?

- Logging for profit but **whose?**

- \$40,000 back to city

- No local foresters employed

- Timber sold out of state

- \$800,000 non-local profit after milling



WHAT IS TIMBERSPEAK?

- Deceptive language
 - Euphemisms
- Misrepresentations

- used by the logging industry to convince people to give up their public and private lands for logging



Pathway to Notch Reservoir

EXAMPLES:

- **Climate Smart Forestry = logging**
 - **Demonstration forest = logging**
 - **Climate resilient forest = logging**
 - **Forest stewardship = logging**
 - **Forest management = logging**
- **Forest climate adaption = logging**
 - **Forest transitioning = logging**
 - **Selective harvesting = logging**



Herbicide use on Mount Washington, MA

CLIMATE-SMART FORESTRY MEANS CUTTING TREES

- Fact: Old and middle-aged trees are needed to absorb excess carbon and keep the planet cool

-Thank you to Chris Matera

For full text document and photo history of climate-smart logging in New England see handout for link to website.

Savoy State Forest, Massachusetts, A Clearcut? No, a “Shelterwood” cut!



10

MA Audubon clearcut their own “conservation” forest in Massachusetts.



Massachusetts Audubon Clearcutting of their own “Conservation” Forest, May 2020

Logging road above the Notch Reservoir

- summer 2024
- muddy run-off and
water pooling



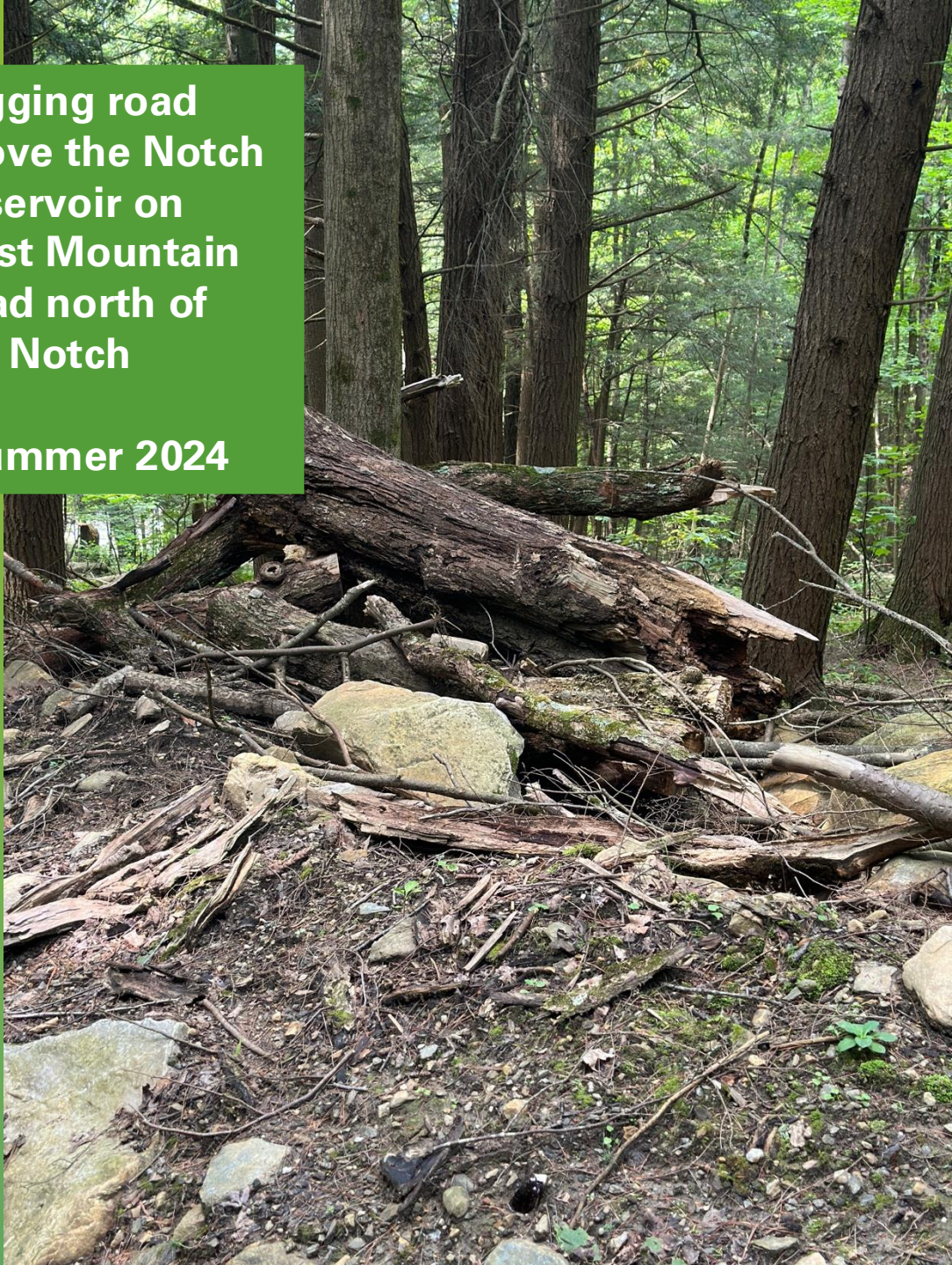
Logging road above the Notch Reservoir

- encroachment
on private
property



Logging road
above the Notch
Reservoir on
West Mountain
Road north of
the Notch

• summer 2024



THE NOTCH RESERVOIR FOREST

- Enjoyed by generations of residents and tourists:

- hiking, biking, fishing,
walking on the Bellows Pipe
Trail to Mount Greylock



Reservoir Road entrance to the Notch Reservoir

THE NOTCH RESERVOIR FOREST

- Home to diverse wildlife:
 - Song birds, raptors, nesting Bald Eagles, migrating birds, bear, deer, beaver, salamanders, squirrels, chipmunks, weasels, etc.



THE NOTCH RESERVOIR FOREST

- A peaceful forest in a residential neighbor zoned rural residential:
 - Industrial logging is inappropriate in residential neighborhoods



THE NOTCH RESERVOIR FOREST

- The only drinking water supply for North Adams:
- Muddy runoff from logging, potential future herbicide use, also surrounding roads can't support logging trucks



THE BELLOWS PIPE TRAIL

- Voted the best fall hiking trail by Condé Nast Traveler in 2024.
- Forest tourism is important to the economy of North Adams



Reservoir Road entrance to Bellows Pipe Trail

FORESTRY MYTH:

- The “forest management” (logging) plan will generate young trees.



View from Mount Greylock towards Raven Rocks

FORESTRY FACT:

- Massachusetts forests already are age-class diverse, possessing seedlings, saplings, pole-size trees and mature trees.

- from Timberspeak at MAforests.org

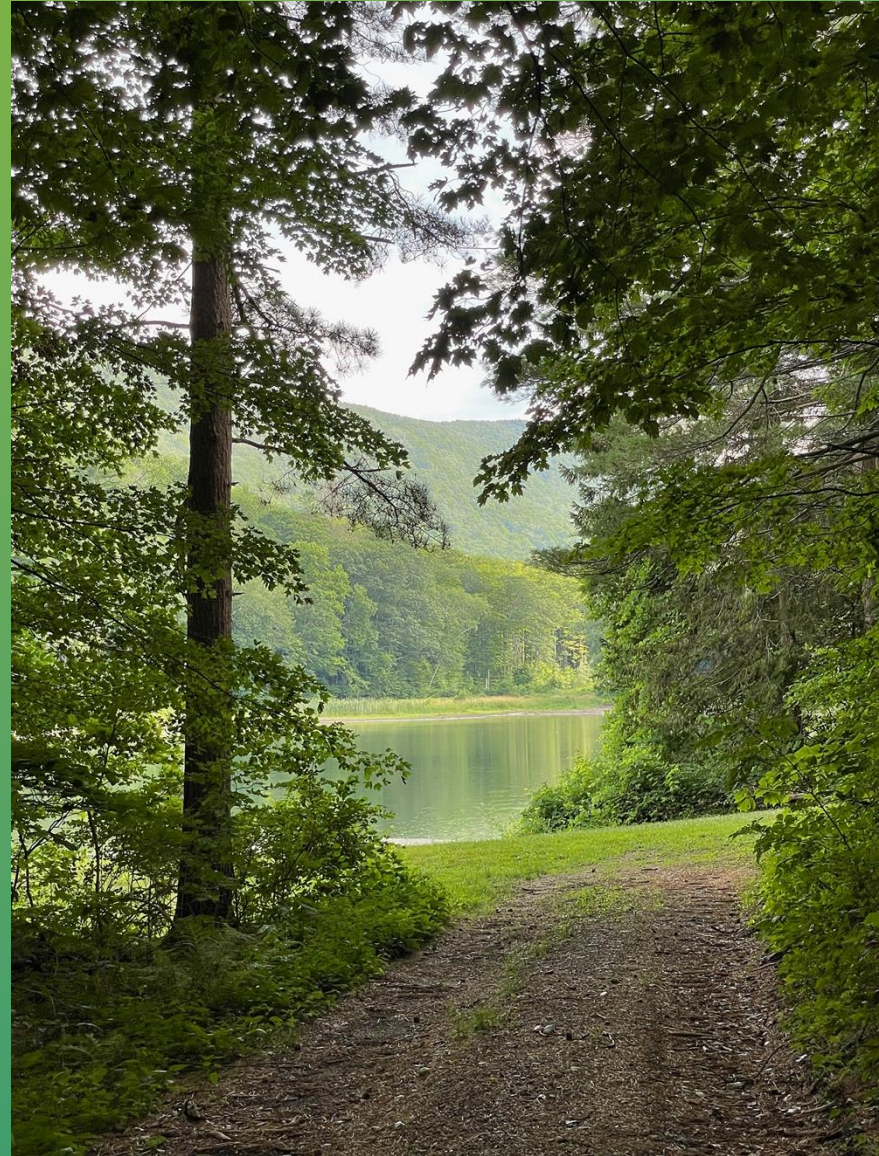


Sandisfield State Forest logging project, 2008

FORESTRY MYTH:

- The young, healthy seedlings planted with this plan will make the forest naturally more efficient at capturing and storing carbon than it is today

- from Timberspeak at MAforests.org



Reservoir Road entrance to Bellows Pipe Trail

FORESTRY FACT:

- Our old-growth forests provide a straightforward way to fight climate change, safeguard clean water and air, create unmatched recreation experiences, and are habitat for rare species

- Sam Evans, National Forests and Parks
Program Leader



After logging at October Mountain State Forest

FORESTRY MYTH:

- Massachusetts foresters are licensed by the State and foresters are dedicated to studying and improving the health of our forests

- from Timberspeak at MAforests.org



Notch Reservoir looking towards Ragged Mountain

FORESTRY FACT:

- A tree procurement forester's salary depends on procuring the best wood at the cheapest price

- from Timberspeak at MAforests.org



Logging at the Quabbin Reservoir in 2009

FORESTRY MYTH:

- Massachusetts forests are choked with stagnant Red Pine and Norway Spruce foreign species plantations

- from Timberspeak at MAforests.org



Notch Reservoir pine stands in winter

FORESTRY FACT:

- State resource agencies have praised the plantations of Red Pine, White Pine and Norway Spruce as important wintering grounds providing shelter for wildlife.
- These stands help offset evergreen habitat loss occurring from declining native Hemlock and help keep our water clean

- from Timberspeak at MAforests.org



Logging down to edge of the Quabbin Reservoir

FORESTRY MYTH:

- “Forest management” plans help sustain healthy, vibrant forests throughout the Commonwealth

- from Timberspeak at MAforests.org



Reservoir Road daylilies along entrance to Bellows Pipe Trail



FORESTRY FACT:

- It is misleading to promote the idea that logging and human intervention is necessary to benefit nature or save the forest.

- from Timberspeak at MAforests.org



Satellite view of clear cuts at Quabbin Reservoir

FORESTRY MYTH:

- Logging on public land is for supplying forest products to support the local economy and employment

- from Timberspeak at MAforests.org



Notch Reservoir near entrance to Bellows Pipe Trail

FORESTRY FACT:

- No forest products will be directly sold to local people. Logs go to Canada for milling then are sent back to the US for sale at stores like Home Depot.

- from Timberspeak at MAforests.org



“Climate-Smart forestry” at Muddy Brook
State Wildlife Management area

FORESTRY MYTH:

- **Flattening a forest is good for songbirds.**

-Please note that the Bellows Pipe Trail and Notch forest is surrounded by fields and farms that house many songbirds. We don't need more fields.



Near Reservoir Road entrance to Bellows Pipe Trail

FORESTRY FACT:

- It is misleading to promote the idea that logging is good for songbirds. The opposite is true. Clear cutting and “selection harvesting” decimates habitat for ALL birds.

- from Timberspeak at MAforests.org



Common Goldfinch

FORESTRY FACT:

- Many of the loggers currently cutting the trees on State forests are from out of state and most of the logs are shipped to Quebec.
- The local timber industry has already degraded much of the private forests, so industry is turning to public forests to access high quality trees.

- from Timberspeak at MAforests.org

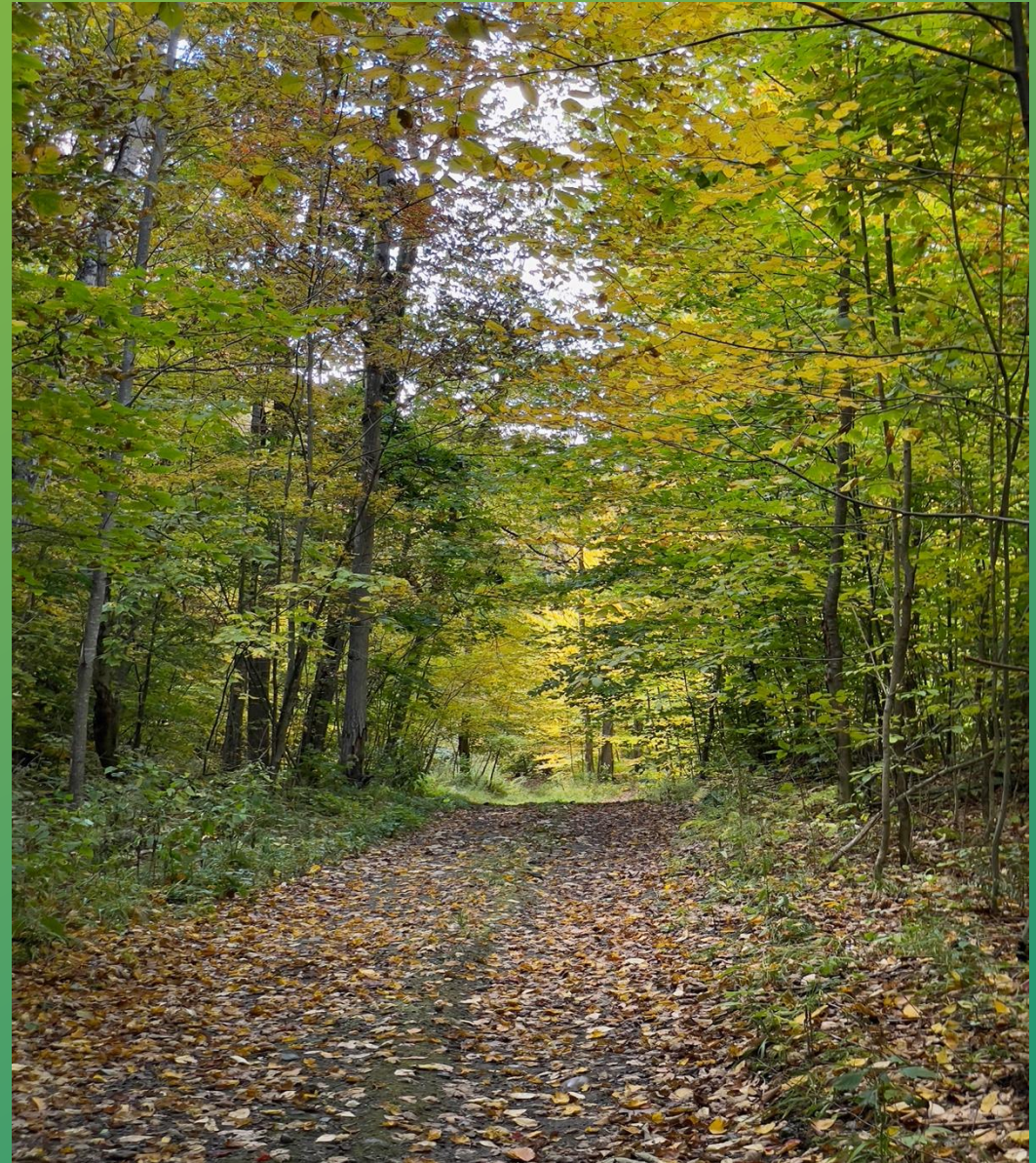


Logs being loaded at Savoy State Forest to go to Quebec

FORESTRY FACT:

- Forest **TOURISM** produces 10 times more income than the wood products industry.

- from Timberspeak at MAforests.org



Reservoir Road entrance to Bellows Pipe Trail



FORESTRY FACT:

- Once it's gone it's gone

New seedling plantings take 30+ years to replace middle-aged trees

Disruption to wildlife lasts decades, or is permanent



Reservoir Road entrance to Bellows Pipe Trail

PLEASE EMAIL:

Mayor Jennifer Macksey

mayormacksey@northadams-ma.gov

Tim Lescarbeau
Commissioner of Public Services

tlescarbeau@northadams-ma.gov



Reservoir Road entrance to Bellows Pipe Trail

FOR MORE
INFORMATION AND
TO SIGN PETITION:

WWW.SAVENOTCHFOREST.COM

